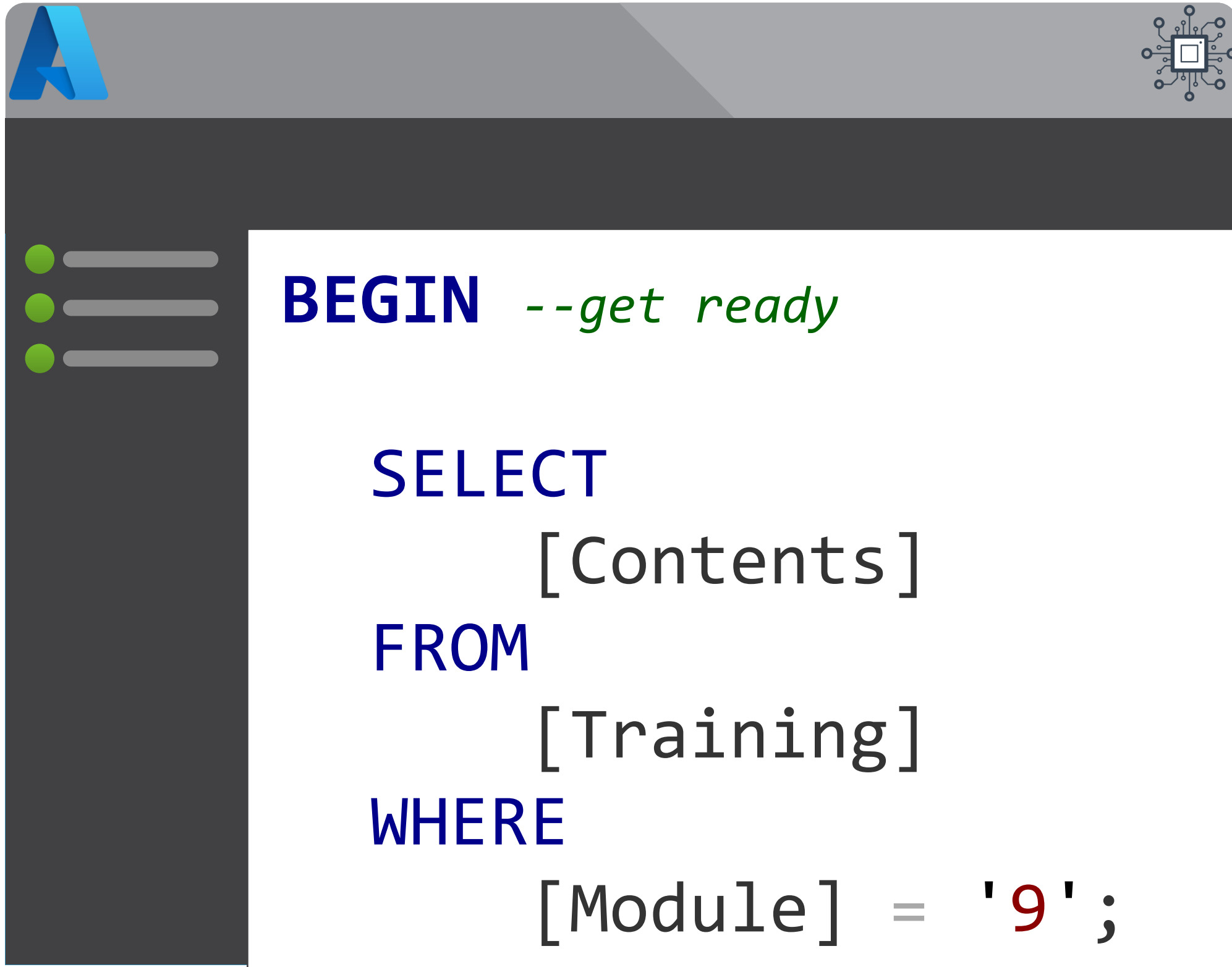


Module 9

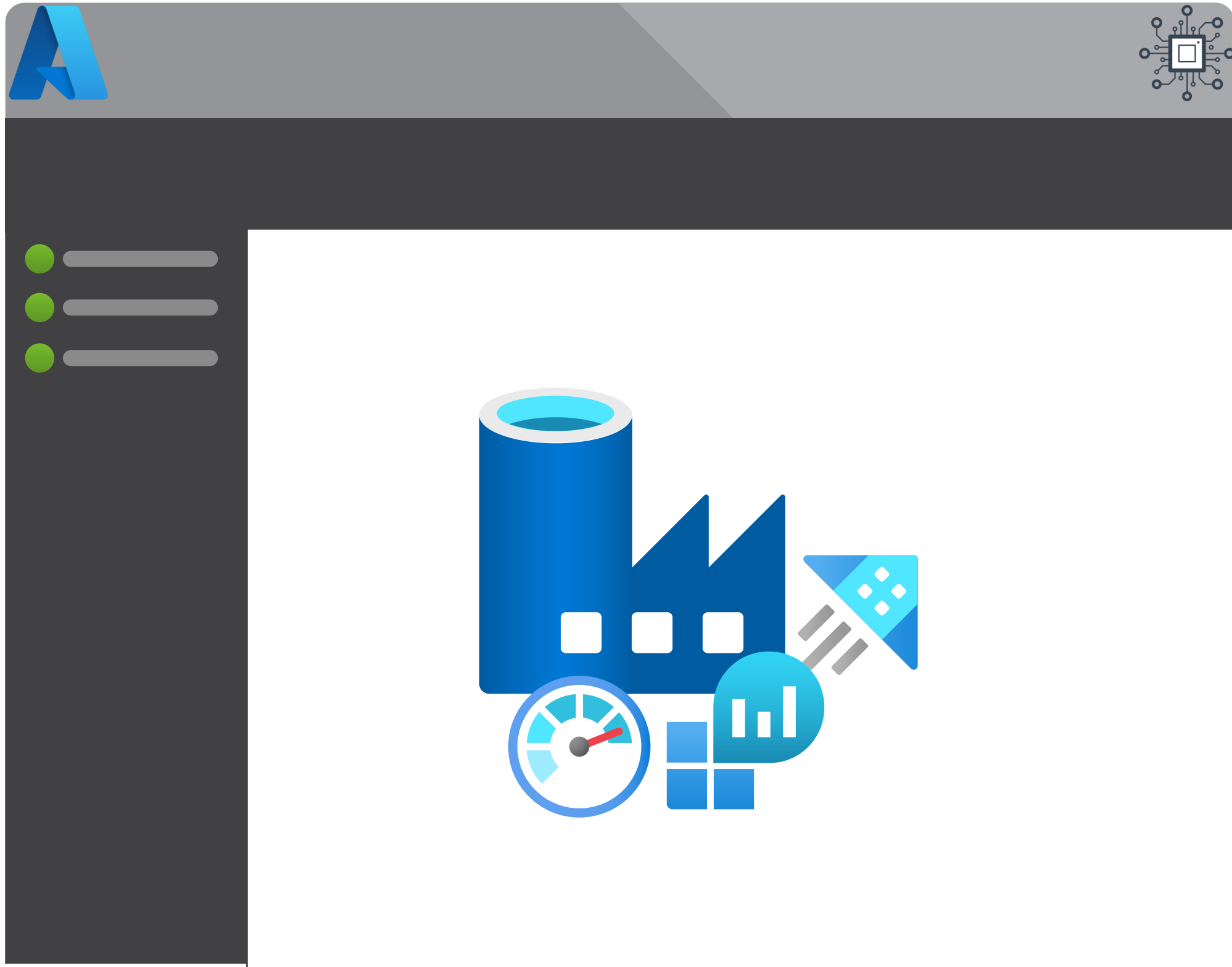
Monitoring & Alerting



- Studio Monitoring
- Log Analytics & Kusto Queries
- Operational Dashboards
- Advanced Alerting

Module 9

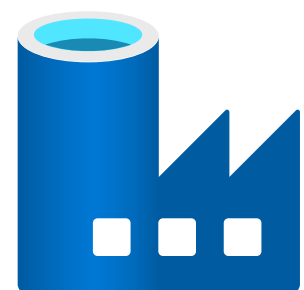
Monitoring & Alerting



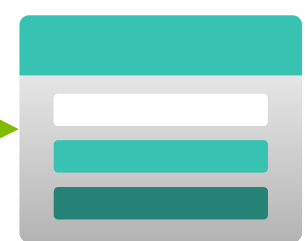
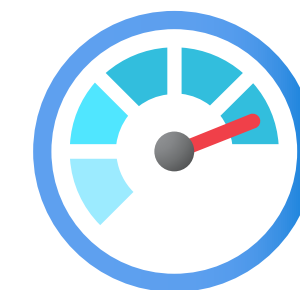
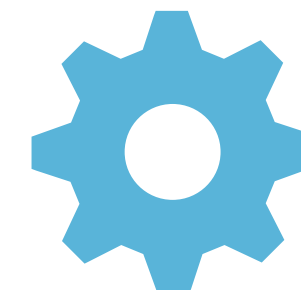
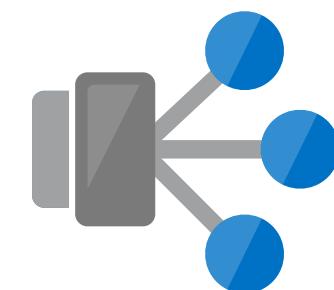
- Studio Monitoring
- Log Analytics & Kusto Queries
- Operational Dashboards
- Advanced Alerting



Diagnostic Settings



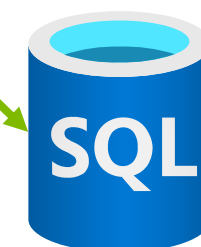
Log Analytics



Storage

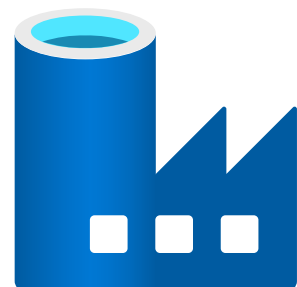
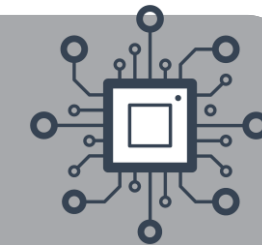


Event Hub

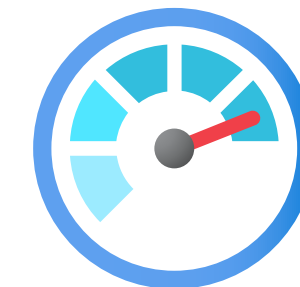
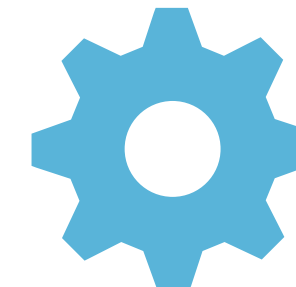
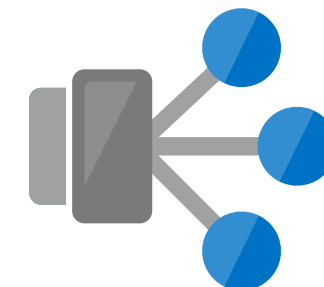




Diagnostic Settings

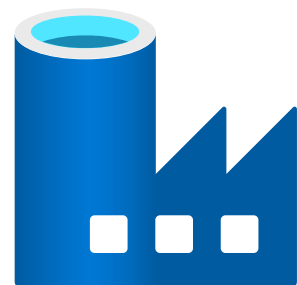


Log Analytics





Using Log Analytics



ADFPipelineRunDurations

| project

TimeGenerated,

Start,

End,

['DataFactory'] = substring(ResourceId, 121, 100),

Status,

PipelineName,

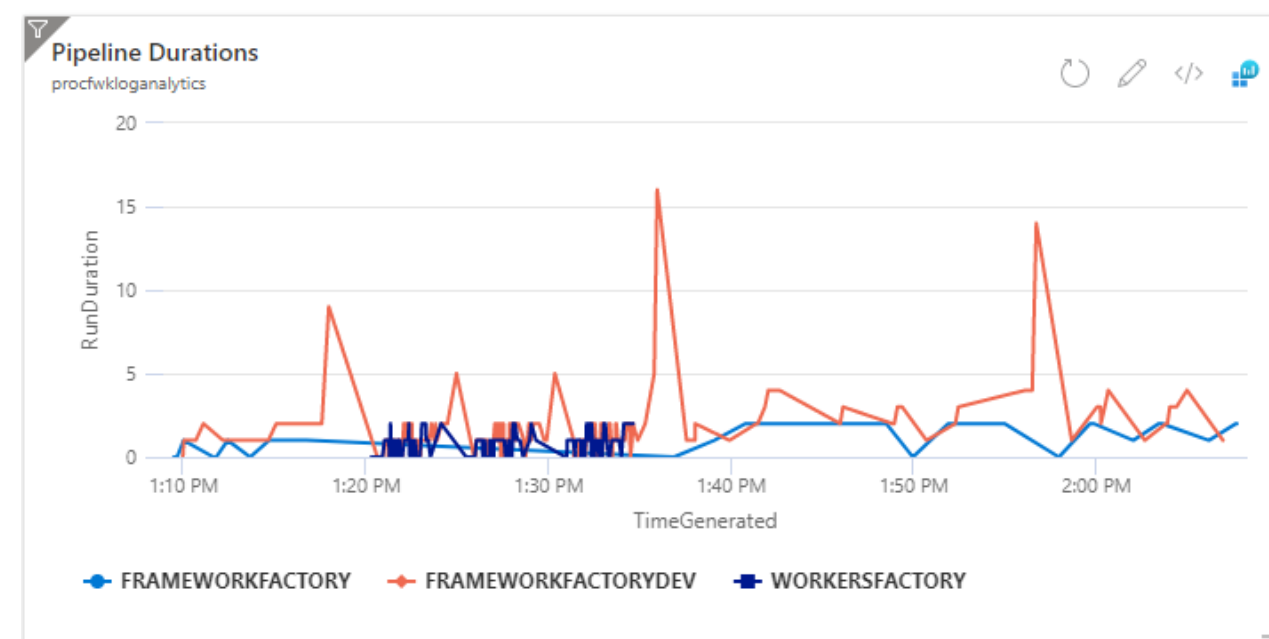
Parameters,

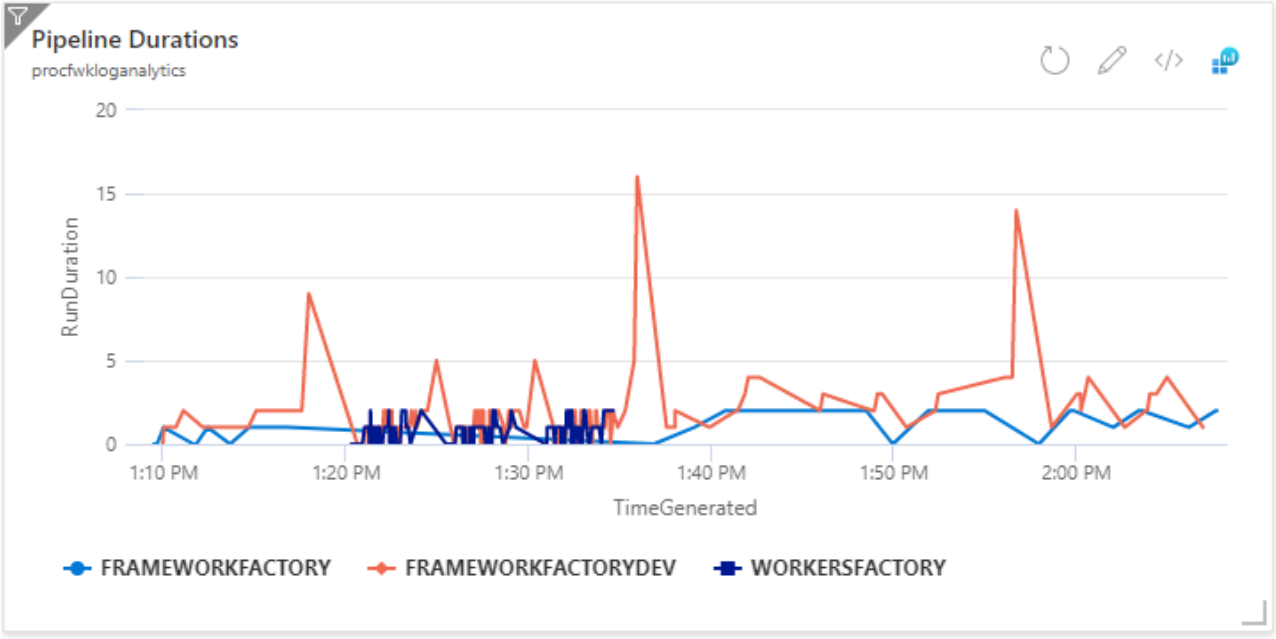
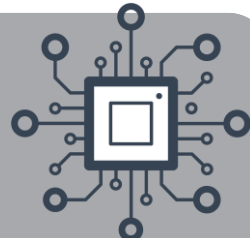
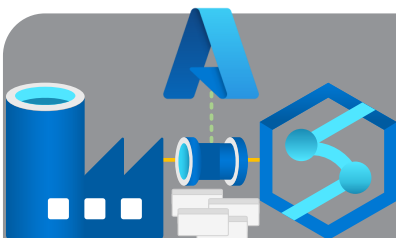
["RunDuration"] = datetime_diff('Minute', End, Start)

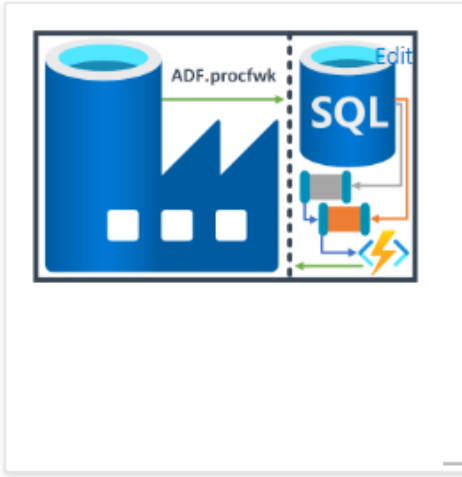
| where

TimeGenerated > ago(1h)


and Status !in ('InProgress', 'Queued', 'Cancelling')









Resources and Content

Blogs

mrpaulandrew.com/ADF.procfwk

GitHub

github.com/mrpaulandrew/ADF.procfwk

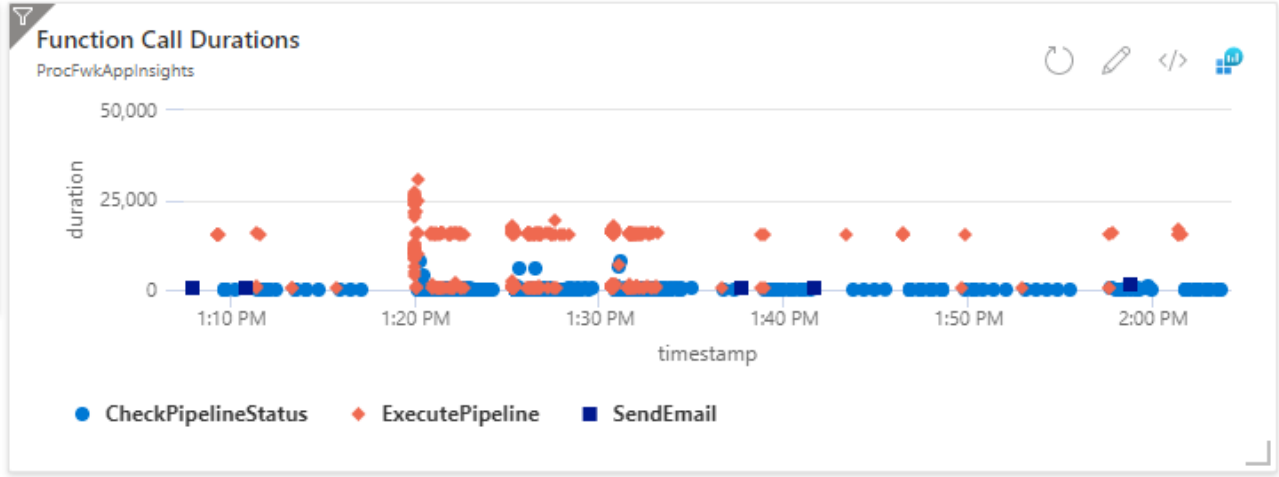
Twitter

[#ADFprocfwk](https://twitter.com/ADFprocfwk)

FrameworkSupportF...

Function App

Running



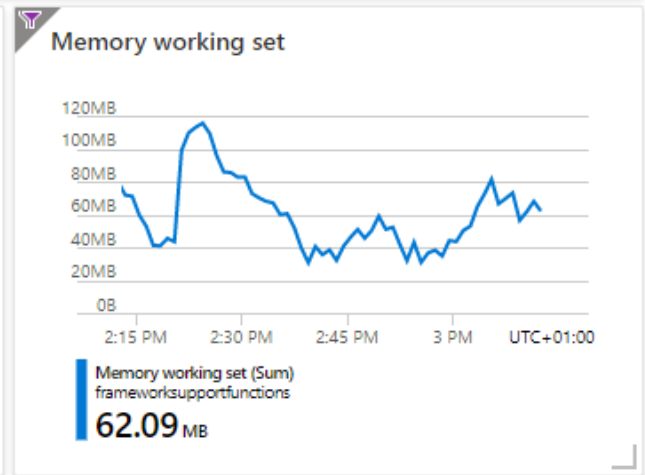
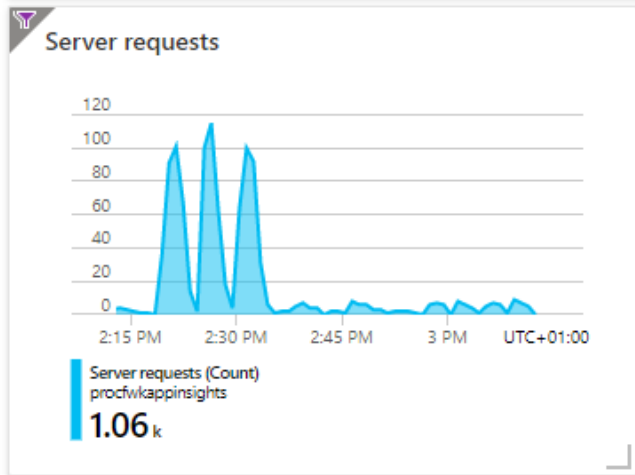
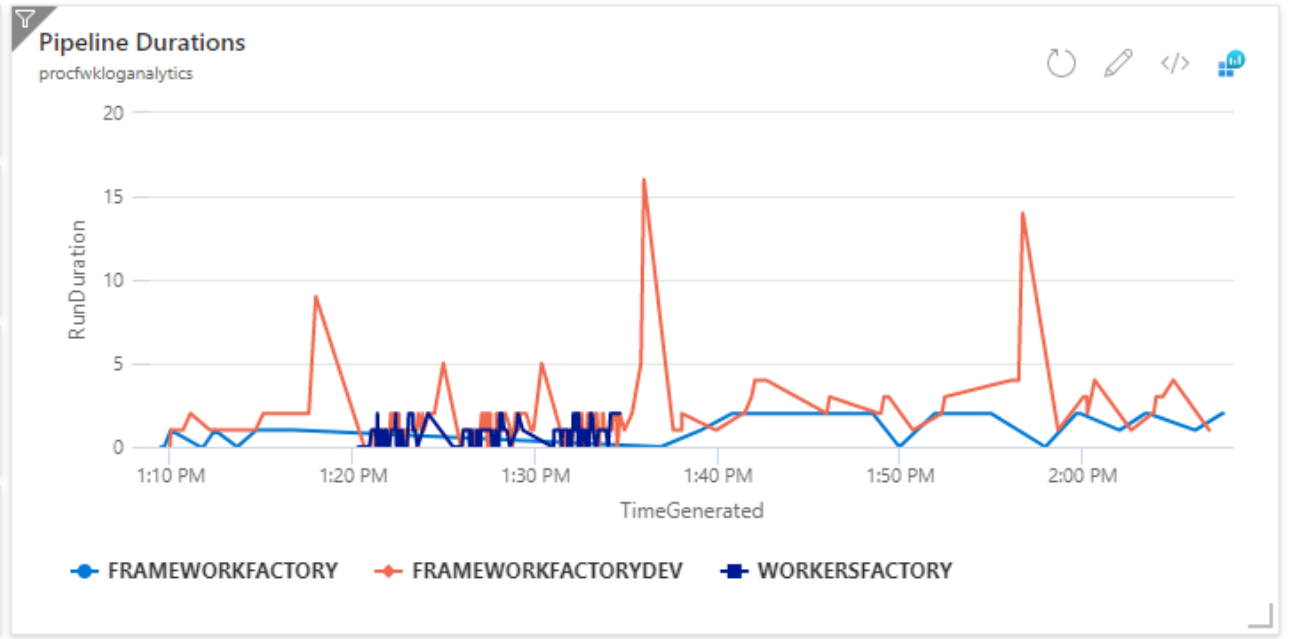
ProcFwkAppInsights

Application Insights

procfwkloganalytics

Workspace

- FrameworkFactor Data factory
- FrameworkFactor Data factory
- FrameworkFactor Data factory
- WorkersFactory Data factory

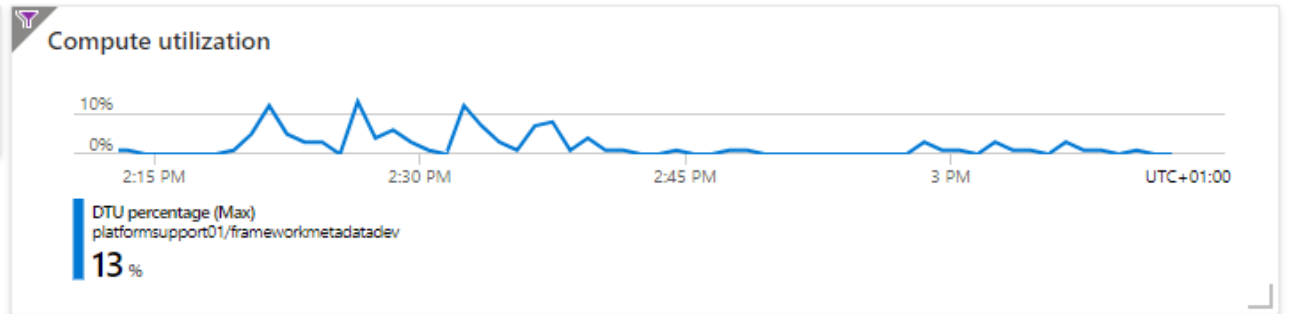


- Resources
- ADF.procfwk
- ProcFwkLogAnalytics
 - FrameworkFactory
 - FrameworkFactoryDev
 - FrameworkKeys
 - platformsupport01
 - FrameworkMetadataDev (pl...
 - frameworksupportstore
 - frameworkstorage01
 - FrameworkSupportFunctions
 - FrameworkFactoryTest
 - WorkersFactory
 - frameworkonsynapse
 - UKSouthPlan
 - FrameworkMetadataTest (pl...
 - ProcFwkAppInsights
 - 9a4fe00e-39d9-4ec8-8f88-5...
 - frameworkdatalake01
 - sqlvaexht4i7t63enw

FrameworkMetadat...

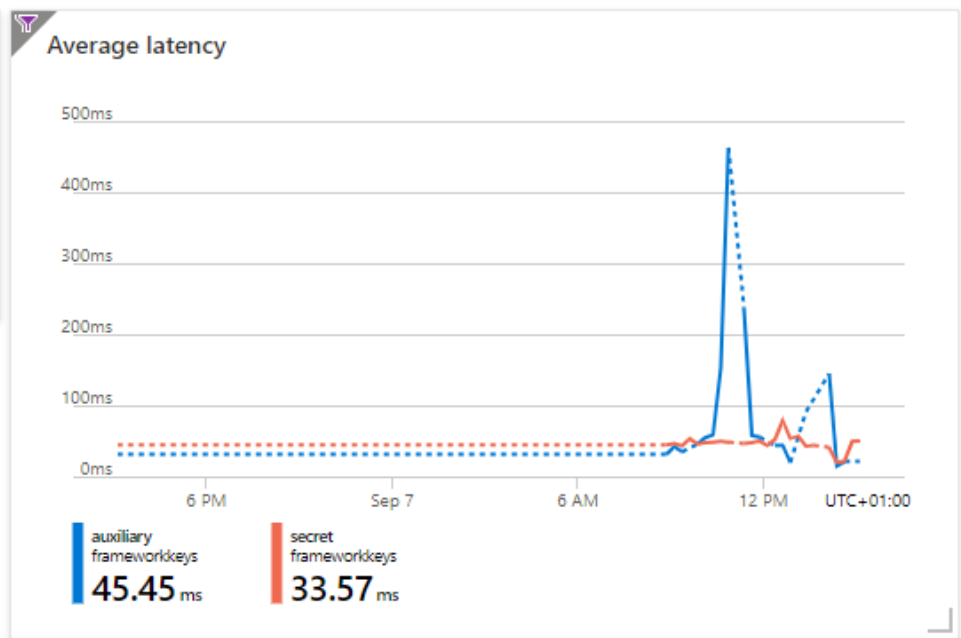
SQL database

Online



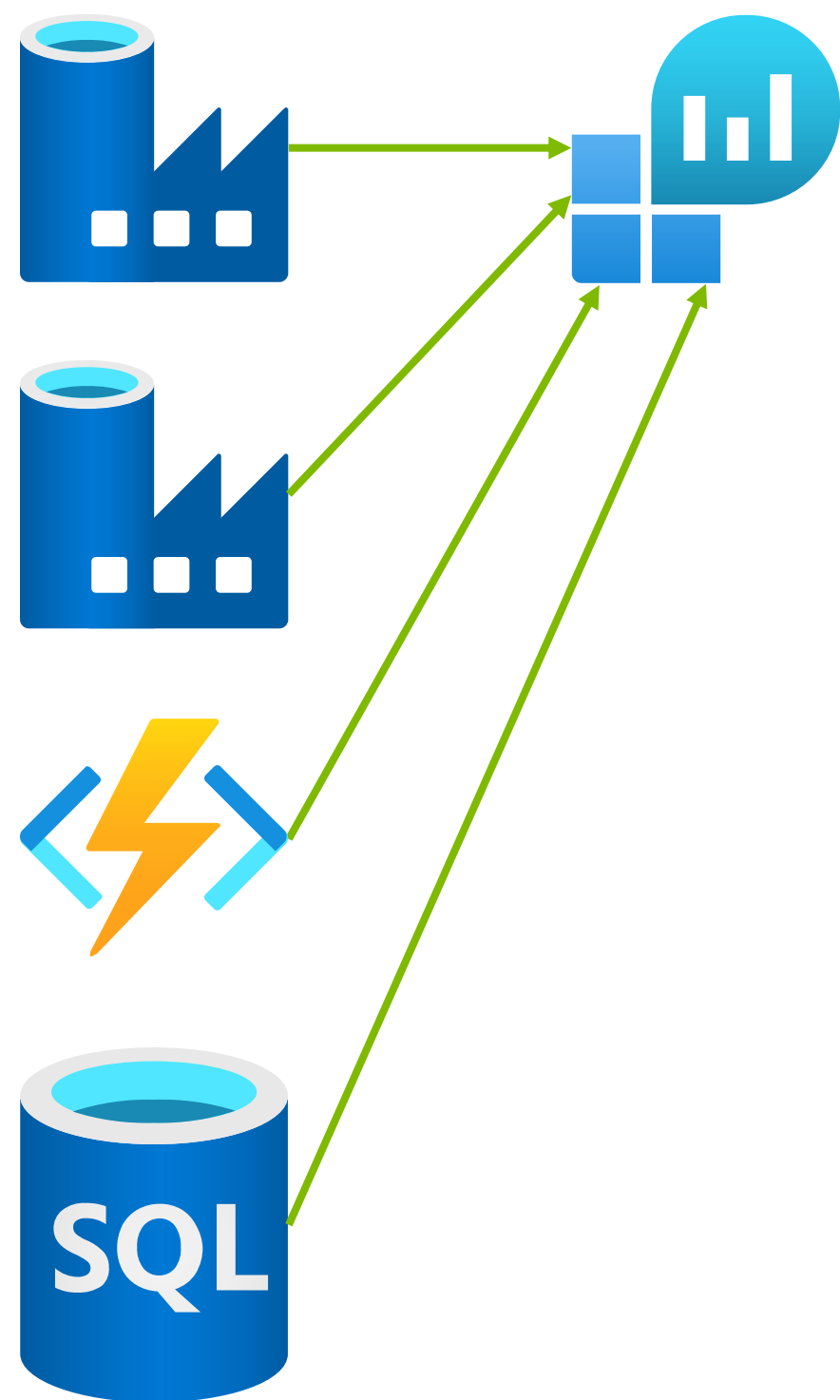
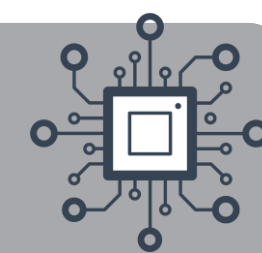
FrameworkKeys

Key vault

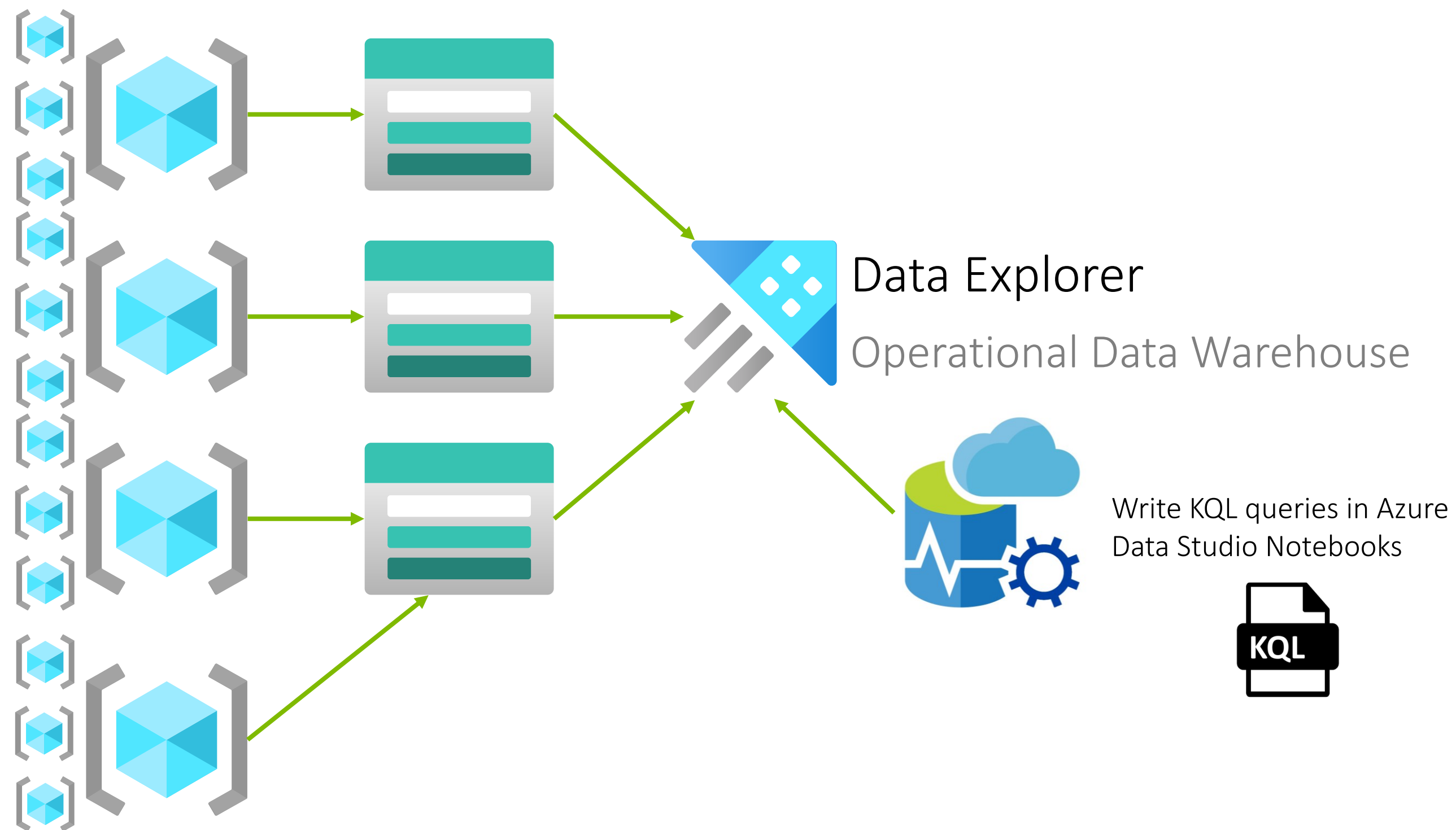




Using Data Explorer



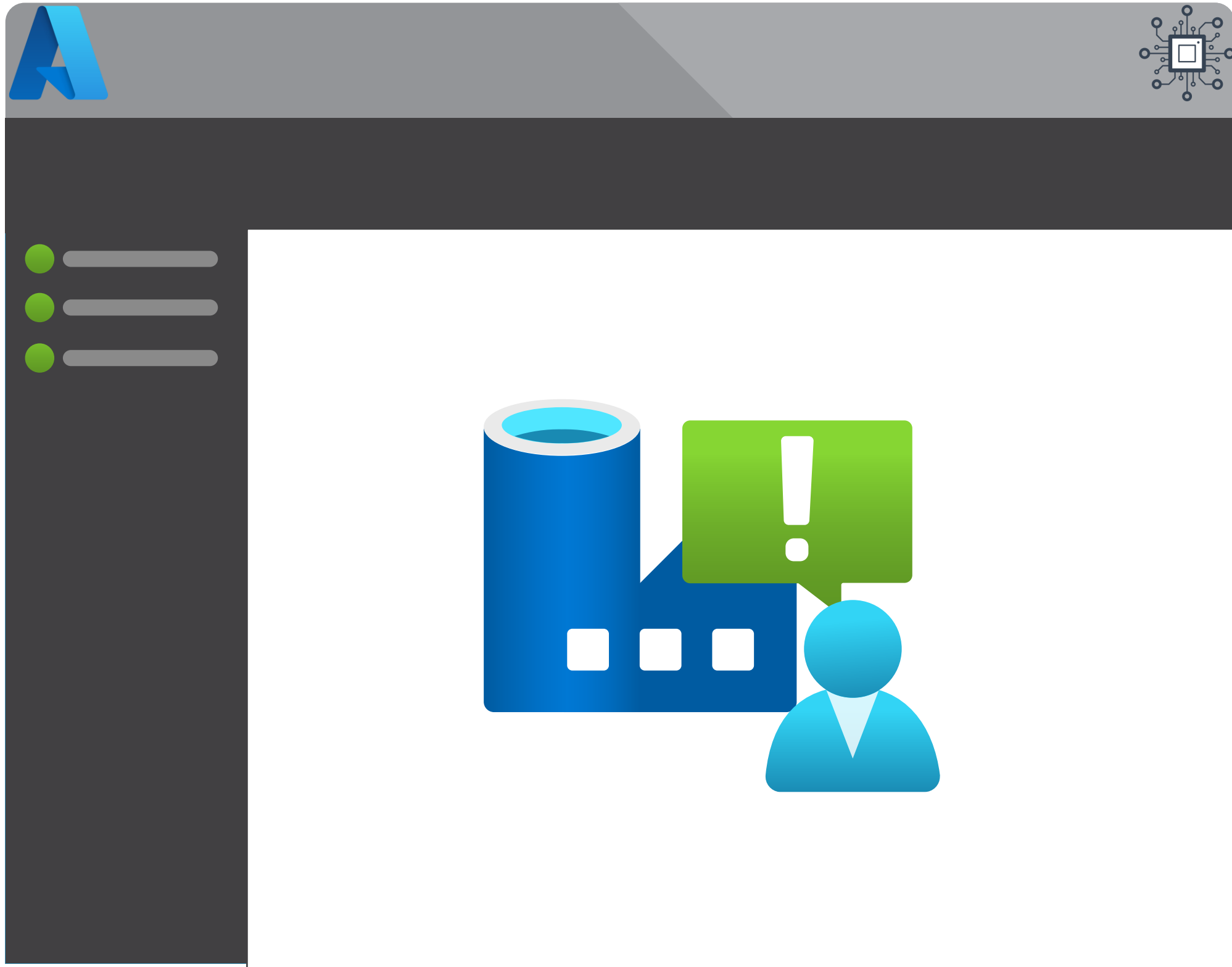
Small/Medium



Large/Enterprise

Module 9

Monitoring & Alerting



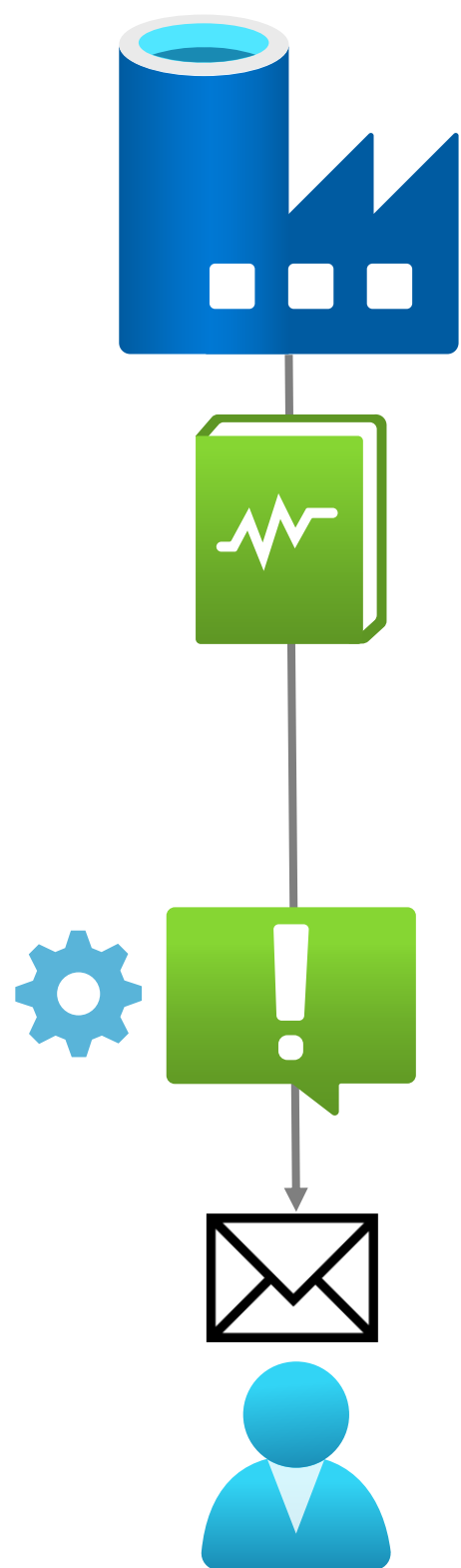
- Portal Monitoring
- Log Analytics & Kusto Queries
- Operational Dashboards
- Advanced Alerting



Alerting Options



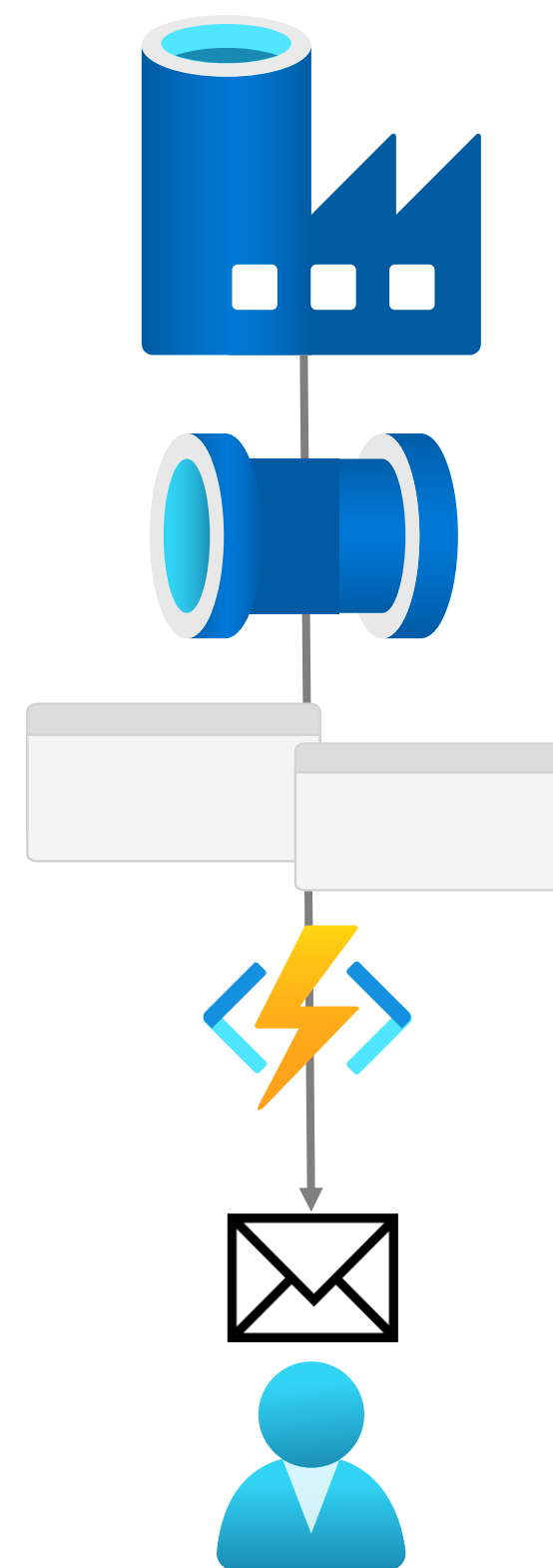
Data Factory Defaults



Custom Queries

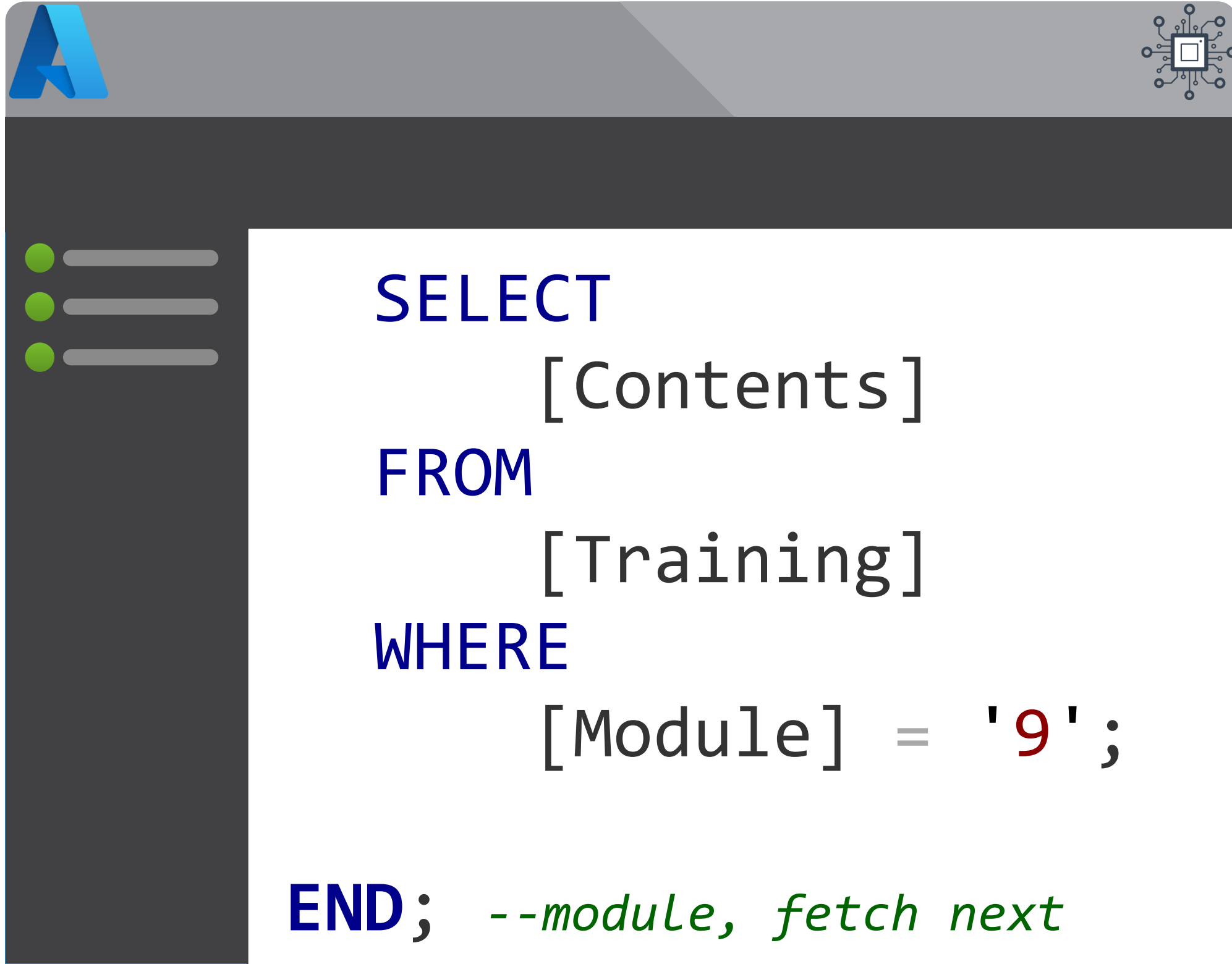


Custom Built Into Pipelines



Module 9

Monitoring & Alerting



- Portal Monitoring
- Log Analytics & Kusto Queries
- Operational Dashboards
- Advanced Alerting